



GMG ColorServer Integration into Kodak Prinergy

Imprint

© 2020 GMG GmbH & Co. KG

GMG GmbH & Co. KG

Moempelgarder Weg 10

72072 Tuebingen

Germany

This documentation and described products are subject to change without notice. GMG GmbH & Co. KG makes no guaranty as to the accuracy of any and all information and procedures described in this documentation. To the maximum extent permitted by applicable law, in no event shall GMG GmbH & Co. KG or the author be liable for any special, incidental, direct, indirect, or consequential damages whatsoever (including, without limitation, injuries, damages for data loss, loss of business profits, business interruption, loss of business information, or any other pecuniary loss) arising out of the use of or inability to use the software or this documentation or the provision of or failure to provide Support Services, even if GMG GmbH & Co. KG has been advised of the possibility of such damages.

Reprinting and copying, as well as other duplication including excerpts of this document, are prohibited without the written permission of GMG GmbH & Co. KG. This also applies to electronic copies.

GMG, the GMG Logo, and GMG product names and logos are either registered trademarks or trademarks owned by GMG GmbH & Co. KG.

All brand names and trademarks are the property of the respective owner and are expressly recognized as such. If brand names, trademarks, or other material are used without the permission of the respective owners, we request appropriate notification. We will immediately stop use of said items.

PANTONE® colors displayed in the software application or in the user documentation may not match PANTONE identified standards. Consult current PANTONE color publications for accurate color. PANTONE®, PANTONE® Goe™ and other Pantone, Inc. trademarks are the property of Pantone, Inc., © Pantone, Inc., 2007. Pantone, Inc. is the copyright owner of color data and/or software which are licensed to GMG GmbH & Co. KG to distribute for use only in combination with GMG ProductionSuite, GMG ColorServer, GMG InkOptimizer, GMG OpenColor, GMG ColorProof, GMG DotProof® and GMG FlexoProof. PANTONE color data and/or software shall not be copied onto another medium or hard disk unless as part of the licensed products.

Microsoft and Windows are registered trademarks of Microsoft Corporation in the United States and/or other countries.

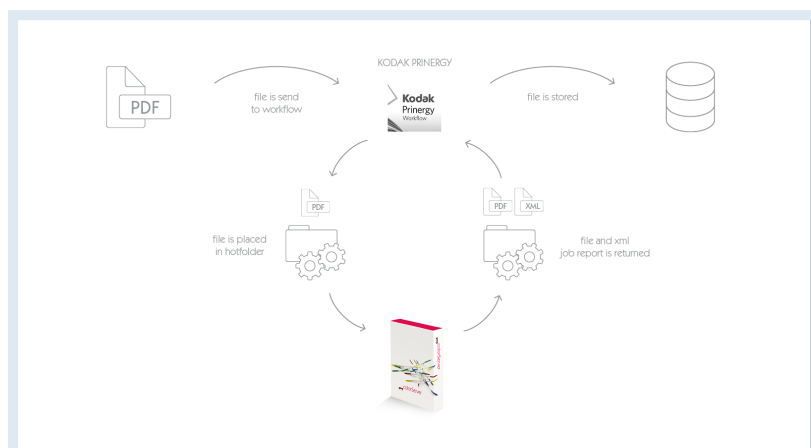
X-Rite is a registered trademark of X-Rite, Incorporated. HP, Hewlett-Packard, and Designjet are registered trademarks of Hewlett-Packard Company. Epson, Epson Stylus, and Epson Stylus Pro are registered trademarks of Seiko Epson Corporation. UltraChrome is a trademark of Epson America, Inc. Nexus is a trademark of Esko. Adobe and Photoshop are either registered trademarks or trademarks of Adobe Systems Incorporated in the United States and/or other countries. Canon is a registered trademark of Canon Inc.

Last update of this documentation: 2020-06-04

This documentation refers to the GMG software version No. 5.2.

1. Integrate GMG ColorServer into Kodak Prinergy

Would you like to simplify your processes and also save time? Integrate GMG ColorServer into your existing Kodak Prinergy workflow.



In this tutorial, you learn how to easily integrate GMG ColorServer into a Kodak Prinergy workflow with the help of Rules Based Automation, short RBA. It will guide you through the configuration of your network, GMG ColorServer, and Prinergy as well as showing you how to use the solution.

Rules Based Automation allows for individually customized workflows and can be modified for your individual needs. This solution is just one example of how GMG ColorServer can be integrated into a Prinergy workflow. Please adjust this solution to your needs.

This workflow integration is still based on creating hotfolders at the GMG ColorServer 5. An API integration is currently not available.

Note Even if the following solution was well tested, the use of RBA is out of scope of GMG products and services and GMG provides no warranties for the use of this solution.

2. Technical requirements

Workflow solution:

- **Provider:** Kodak
- **Software:** Prinergy
- **Supported version:** Version 4 to 8
- **Additionally license option required:** Prinergy RBA license

GMG solution:

- **Provider:**GMG GmbH & Co. KG
- **Software:**GMG ColorServer
- **Supported version:** 5.0 or higher
- **Additionally license option required:** none

3. Preparing the network

Creating folders on the Prinergy server

First of all, you need to create GMG ColorServer hotfolders and output folders on the Prinergy server.

These hotfolders and output folders should be placed on the Prinergy **Jobs** volume in a GMG directory.

Tip Placing the hotfolders and output folders on the Prinergy server guarantees that Prinergy is able to access these hotfolders for file exchange.

Creating folders on the GMG PC

We recommend placing the hotfolders and output folders on the Prinergy server.

However, if you want to place them on the GMG PC instead of the Prinergy server nevertheless, you have to make these folders accessible for the Prinergy server as follows:

1. On the GMG workstation, create a new Windows user named **Araxi** and provide administrator rights to this user.

Araxi is the default administrator name used by Prinergy. Use the same password that is defined for the Araxi user in Prinergy.

Tip You do not have to log in to the GMG computer as the **Araxi** user. This new user is only necessary to enable the access for **Prinergy**.

2. On the GMG computer, create a share to the network directory that contains the GMG hotfolders and GMG output folders.
3. On the Prinergy server, open the **Prinergy Administrator**.
4. From the **Tools** menu, select **Configure System**.
5. In the **Configuration Options** dialog box, click the **Input Volumes** tab.
6. Click **Browse**, browse to the shared folder, select it, and click **OK**.
7. Click **Add Volume**.
8. Click **OK**.

Please, consult the **Prinergy System Administrator Guides**, chapters **Creating an Araxi service account** and **Setting up a tertiary server**, for further information.

Note The following instructions are based on the assumption that the folders have been created on the Prinergy server and therefore require adjustment.

4. GMG ColorServer configuration

Adding the hotfolder location

First, you need to add the Prinergy server with your input and output folders to the known locations in GMG ColorServer.

1. Start the GMG **Hotfolder Service Configurator**.
2. Add your Prinergy server under **Resources** > **Hotfolder Locations** > **New**.

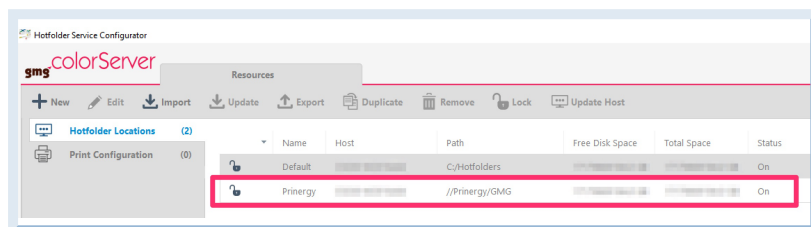


Fig. 1 Screenshot of adding the Prinergy server as hotfolder location to GMG ColorServer

5. GMG ColorServer configuration

Creating a PDF hotfolder

The following steps show you how to create a new PDF hotfolder in GMG ColorServer:

1. Start the GMG ColorServer client.
2. Under **Hotfolders** > **PDF hotfolder** > **New**, create a new PDF hotfolder.

After that, a new dialog will open.

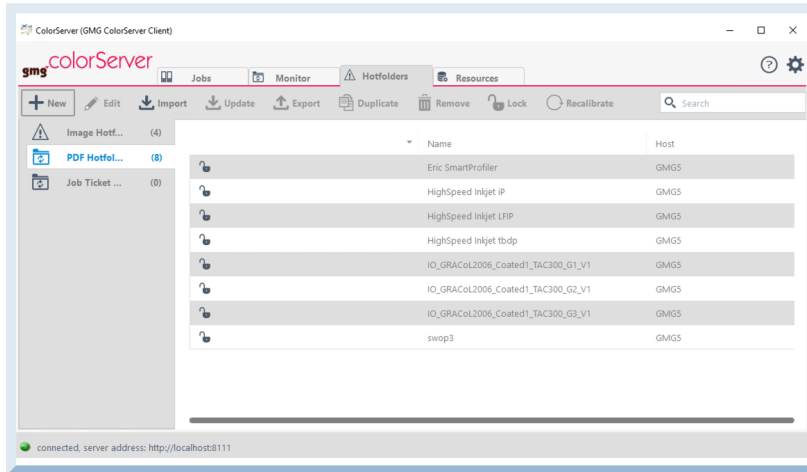


Fig. 2 Screenshot of creating a new PDF hotfolder in GMG ColorServer.

6. GMG ColorServer configuration

Configuring the **Host** and **Input Folders**

The following steps show you how to configure the **Host** and **Input Folders** section of the dialog window as follows:

1. Under **Host** > **Target Computer**, select your Prinergy server.
2. Under **Input Folders** > **Hotfolder Location**, add the hotfolder that is located on your Prinergy server.
3. Under **Input Folders**, select the option **Use Same Folder Structure in Output**.
4. Under **Input Folders** > **Folder Depth**, select **Unlimited**

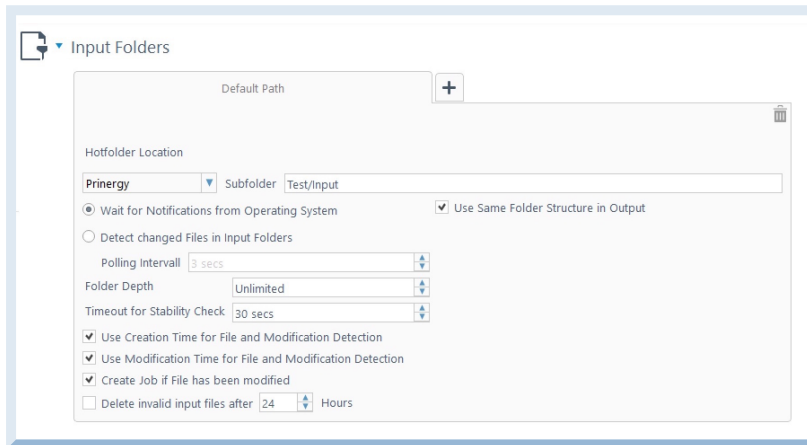


Fig. 3 Screenshot of the **Input Folders** section after the configuration.

7. GMG ColorServer configuration

Configuring the **Hotfolder Output**

Under **Workflow**, configure the **Hotfolder Output** section of the dialog window as follows:

1. Under **Output** > **Hotfolder Output**, add the output folder that is located on the Prinergy server.
2. Under **Output** > **Hotfolder Output** > **Existing Files**, choose the option **Overwrite Existing File**.

Note Please, do **not** add a **Prefix** or **Suffix** value under **Output Name**. Otherwise, the rule set will not be able to detect the converted files.

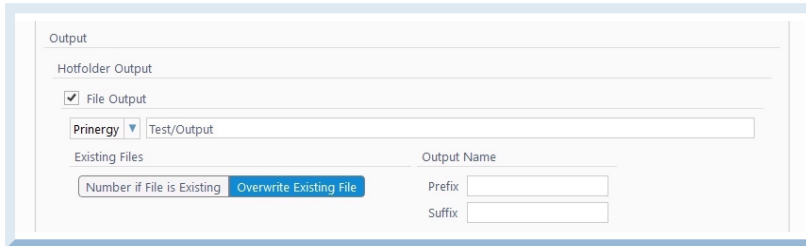


Fig. 4 Screenshot of the **Hotfolder Output** section after the configuration.

8. GMG ColorServer configuration

Configuring the **Cleanup / Backup**

Configure the **Cleanup / Backup** section of the dialog window as follows:

1. Under **Cleanup / Backup > Successful Jobs**, select **Delete Input Files** and **Delete Job from Job List**.
2. Under **Cleanup / Backup > Jobs with Warnings**, select **Delete Input Files** and **Delete Job from Job List**.
3. Under **Cleanup / Backup > Jobs with Warnings**, deactivate **Move Input Files after Processing**.
4. Under **Cleanup / Backup > Jobs with Errors**, select **Delete Input Files**.

9. GMG ColorServer configuration

Configuring the **Report**

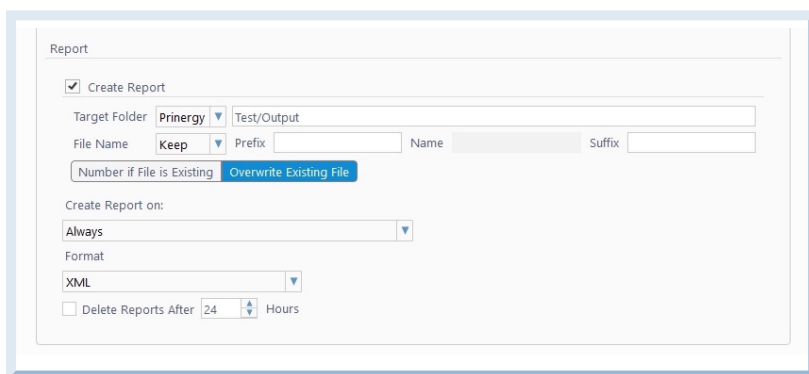
Under **Workflow**, configure the **Report** section of the dialog window as follows:

1. Select the **Create Report** checkbox
2. Under **Target Folder**, select the same folder that was selected as output folder under **Workflow > Output > Hotfolder Output > File Output**.

Note Report and PDF output file must be placed in the same folder.

3. Under **File Name**, select **Keep**.
4. Under **Create Report on**, select **Always**.
5. Under **Format**, select **XML**.
6. Disable the **Delete Reports After** checkbox.
7. Select **Overwrite Existing File**.

Note Please, do **not** add a **Prefix** or **Suffix** value under **Output Name**. Otherwise, the rule set will not be able to detect the converted files.



The screenshot shows the 'Report' configuration dialog window. The 'Create Report' checkbox is checked. The 'Target Folder' is set to 'Prinergy' and the text field contains 'Test/Output'. The 'File Name' dropdown is set to 'Keep'. The 'Prefix' and 'Suffix' text fields are empty. The 'Number if File is Existing' dropdown is set to 'Overwrite Existing File'. The 'Create Report on:' dropdown is set to 'Always'. The 'Format' dropdown is set to 'XML'. The 'Delete Reports After' checkbox is unchecked, and the value is set to '24' Hours.

Fig. 5 Screenshot of the **Report** section after the configuration.

10. GMG ColorServer configuration

Finishing the hotfolder configuration

1. Configure all other hotfolder settings according to your needs.
2. Click **Save and Close** to save the hotfolder settings.

Tip Repeat all these steps for every hotfolder you want to use.

11. Kodak Prinergy configuration

Setting up the Custom Fields

The following steps show you how to set up the **Custom Fields** in Prinergy's **Custom Fields Manger**.

1. Start the **Prinergy Workshop** and log on with your user ID and password.
2. From the **Tools** menu, choose **Custom Fields Manager**.
3. In the **Custom Fields Manager** dialog box, in the panel on the left side, select **Page**
4. Click the **Add** button.
5. In the **Add Custom Field** dialog box, type **GMG-Status** into the **Name** field.

Note Please, use exactly the name **GMG-Status** and take care of spelling errors. Otherwise, the rule set will not work.

6. In the **Type** field, select **Text**.
7. In the **Show in Workshop** field, select the checkbox and click **Close**.

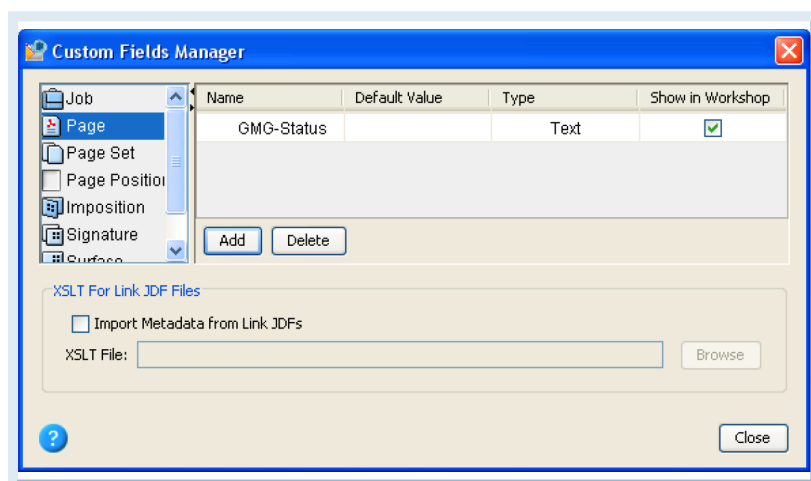


Fig. 6 Screenshot of setting up the **Custom Fields** in **Custom Fields Manager**.

12. Kodak Prinergy configuration

Setting up a trapping template

The following steps show you how to set up a trapping template in Prinergy.

1. From the **Tools** menu, choose **Process Template Editor**.
2. From the **File** menu, choose **New Process Template**.
3. In the new **Process Template**, select the **Trap** checkbox.
4. Expand the **Trap** option and set up your preferred trapping option.
5. **[Optional:]** If you want to use thumbnails, select the **Thumbnail** checkbox.
6. **Save** the template.

Note Do not select additional checkboxes. Especially the **ColorConvert** checkbox must not be selected.

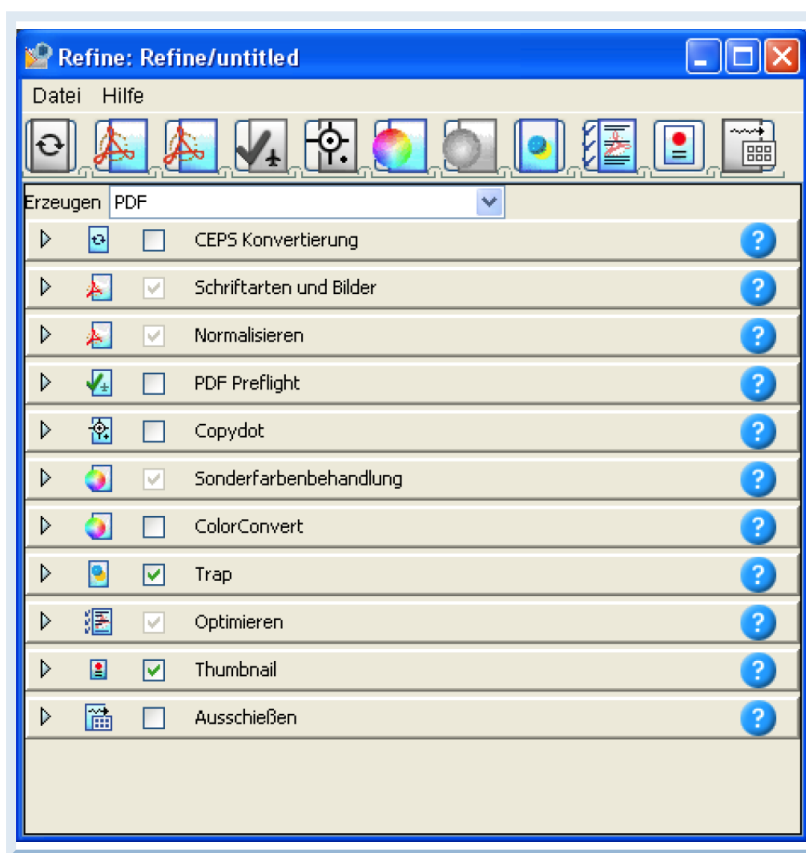


Fig. 7 Screenshot of setting up a trapping template in **Process Template Editor**.

13. Kodak Prinergy configuration

Setting up rule sets

This workflow solution uses one copy of a rule set for each hotfolder.

If you use, for example, three hotfolders in GMG InkOptimizer, you need three copies of this rule set.

Note Make sure that you have a copy for each of your hotfolders.

14. Kodak Prinergy configuration

Importing a rule set

The following steps show you how to import the rule set:

1. Extract the **GMG Ruleset ColorServer 5 v01.zip** file that you have received together with this manual.
2. In **Job Finder**, from the **Tools** menu, select **Rule Set Manager**.

Note If you do not have full administrator user rights, **(Read Only)** is shown in the title bar of the **Rule Set Manager** window, and all **Rule Set Manager** buttons are unavailable. If you have full administrator rights, all **Rule Set Manager** buttons will be available.

3. In **Rule Set Manager**, in the **Rule Set Library** list, right-click on the root level **Rule Sets** folder and create a new group called **GMG**.
4. Right-click on **GMG** and select **Import**.
5. In the **Import** dialog box, select the **GMG Ruleset ColorServer 5 v01.xml** file that you extracted from the **GMG Ruleset ColorServer 5 v01.zip** file in Step 1. (see "Extract the GMG Ruleset ColorServer 5 v01.zip file that you have received together with this manual." on page 16).

15. Kodak Prinergy configuration

Changing a rule set - Rule Set Editor

The first part for changing the rule set will take place in the **Rule Set Editor**:

1. To open the **Rule Set Editor** window, double-click the imported rule set.
2. Double-click the connecting line between the **Selected pages** result and the **GMG-Conversion – configure me** action.

The **Code Editor** window opens.

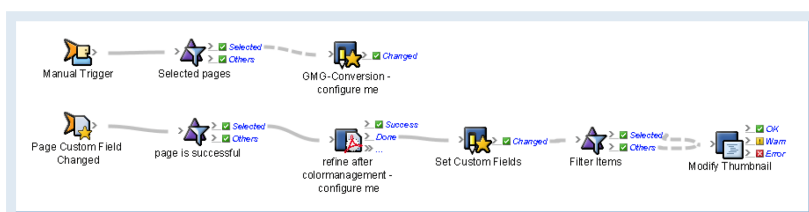


Fig. 8 Screenshot of the **Rule Set Editor** window.

Changing a rule set - Code Editor

The second part for changing the rule set will take place in the **Code Editor**:

1. In the **Code Editor** > **line 23**, replace the magenta colored text enclosed by quotation marks with the **Hotfolder Name** of the hotfolder that you want to use. This should be a short text that describes the hotfolder settings.
2. In the **Code Editor** > **line 24**, replace the magenta colored text enclosed by quotation marks with the **path of the hotfolder** that you want to use.
3. In the **Code Editor** > **line 25**, replace the magenta colored text enclosed by quotation marks with the **path of the output folder** that you want to use.
4. In the **Code Editor** > **line 35**, replace the magenta colored text enclosed by quotation marks with the **thickness of the thumbnail border in pixels** that you want to use.
5. In the **Code Editor** > **line 47**, you can change the magenta colored number with the **time out (in seconds)** that you want to use.

Tip The default time out of 900 seconds (15 minutes) turned out to be a good average value, but you can increase this if you are going to convert very many files at once.

6. Click **Save** to close the **Code Editor**.

The **Rule Set Editor** will show again.

```

19
20
21
22
23
24
25
26
27
28
29
30
31
32
33
34
35
36
37
38
39
40
41
42
43
44
45
46
47
48
ColorServerVersion = "5.0"

'Path of the Hotfolder and Outputfolder at GMG
HotfolderName = "GMG Hotfolder" 'Name of the GMG Hotfolder conversion, e.g. "ISOcoated 39", "InkOptimizer G3 GraCOL"
Hotfolder = "Input Folder Path" 'For Example "\\PROOF-PC\Colorserver\ISOcoated39_IO\PDF In"
Outfolder = "Output Folder Path" 'For Example "\\PROOF-PC\Colorserver\ISOcoated39_IO\PDF Out"

'----- Prinergy Custom fields to use -----
Statusfield = "GMG-Status" 'This field will show the processing status

'---- Additional Settings ----
DeleteFromOutfolder = True 'If 'True', the PDF and the Reportfile will be deleted from the GMG-Outfolder. If
ModifyThumbnail = True 'If 'True', the Thumbnail will get a frame to show the processing status.
ThumbnailBorder = 10 'Thickness of the Thumbnail border in Pixel.
ThumbnailProcessingColor = "Blue" 'Bordercolor of Thumbnails that are currently processing.
ThumbnailOKColor = "Darkgreen" 'Bordercolor of Thumbnails that have been processed successfully.
ThumbnailWarningColor = "Orange" 'Bordercolor of Thumbnails that have been processed with warnings.
ThumbnailErrorColor = "Red" 'Bordercolor of Thumbnails that could not be processed because of an error.

'----- Timeout-Settings -----

WaitingSeconds = 15 'in Seconds - Watch the hotfolder each x Seconds. (This should be the average time
Timeout = 900 'in Seconds - Abort if the Files have not been found within this time. Default valu

```

Fig. 9 Screenshot of the **Code Editor** window after editing.

If you don't want to use trapping after color management

In the **Rule Set Editor**, just delete the lower part of the rule, the **Page Custom Field Changed** event plus all connected actions.

If you do want to use trapping after color management

If you want to use trapping after color management, the following steps show you what to do:

1. In the **Rule Set Editor**, double-click the connecting line between **Selected** result for **page is successful** and the **refine after color management - configure me** action.

The **Process Template Path** box opens.

2. In the **Process Template Path** box, enter the trapping template you created earlier and click **OK**.

The **Process Template Path** box closes.

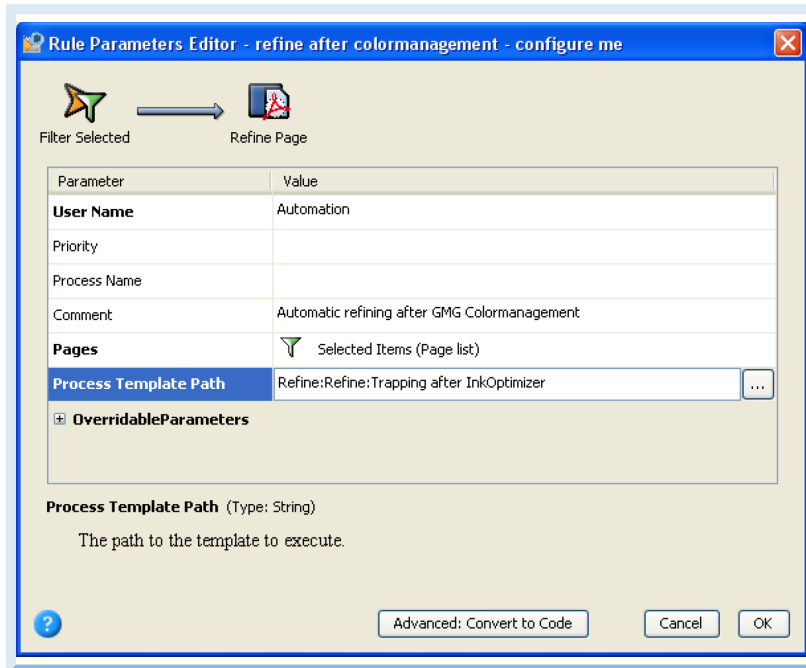


Fig. 10 Screenshot of the **Rule Parameters Editor** and its **Process Template Path** box.

If you also want to modify the thickness of the Thumbnail border after the refinement

If you want to modify the thickness of the **Thumbnail** border after the refinement, the following steps show you what to do:

1. In the **Rule Set Editor**, double-click **Modify Thumbnail**.
2. Double-click on both filters and modify the **Thumbnail** border.

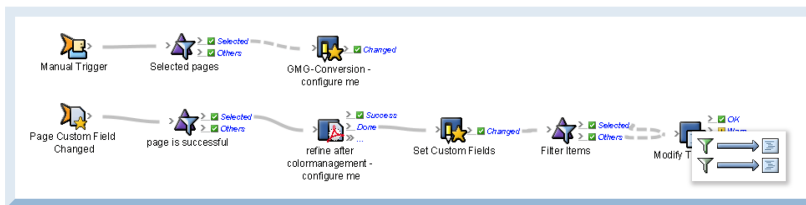


Fig. 11 Screenshot of modifying the **Thumbnail** border in **Rule Set Editor**.

16. Kodak Prinergy configuration

Saving a rule set

The following steps show you how to save the rule set:

1. **Save** the rule set under the same name that you used as **Hotfolder Name** earlier, under (see "GMG ColorServer configuration" on page 7).
2. Close the **Rule Set Editor**.
3. Create additional copies of the rule set for each GMG Hotfolder.

Note As this workflow solution uses one copy of a rule set for each hotfolder, make sure that you have a copy for each of your hotfolders.

17. Using the workflow solution

Using the rule set

The following steps show you how to use the rule set in your workflow solution:

1. Open the **Job Manager**.
2. From the **Tools** menu, select the **Rule Set Manager**.
3. In the **Rule Set Manager**, enable all rule sets of the GMG group as system rules.
4. Open or create a job in Prinergy and add some pages.
5. From the **View** menu, select **Visible Columns**.
6. Select **GMG-Status** and click **OK**.
7. In the **Pages** view, select all pages that you want to convert and right-click to open the context menu.
8. From the context menu, select **Manual Start Rules > System > GMG > [Name of the conversion]**.
9. If the **Start Process** box appears, click **OK**.

Now, the **GMG-Status** custom field of every page will be updated and the files will be transferred to GMG ColorServer.

10. After all processing files are converted or the timeout is reached, switch to the **History** view.

Tip If any errors should have occurred, an error message will show detailed information about these errors.

11. Switch to the **Thumbnail** view.

The status of each page is indicated by a colored frame around the thumbnail in **Thumbnail** view:

- **Processing** status in **List** view will show up surrounded by a **blue** frame.
- **Successful** status in **List** view will show up surrounded by a **green** frame.
- **Successful with warning** status in **List** view will show up surrounded by an **orange** frame.
- **Error** status in **List** view will show up surrounded by a **red** frame.

Note It might be necessary to **refresh** the view to see the changed thumbnails.

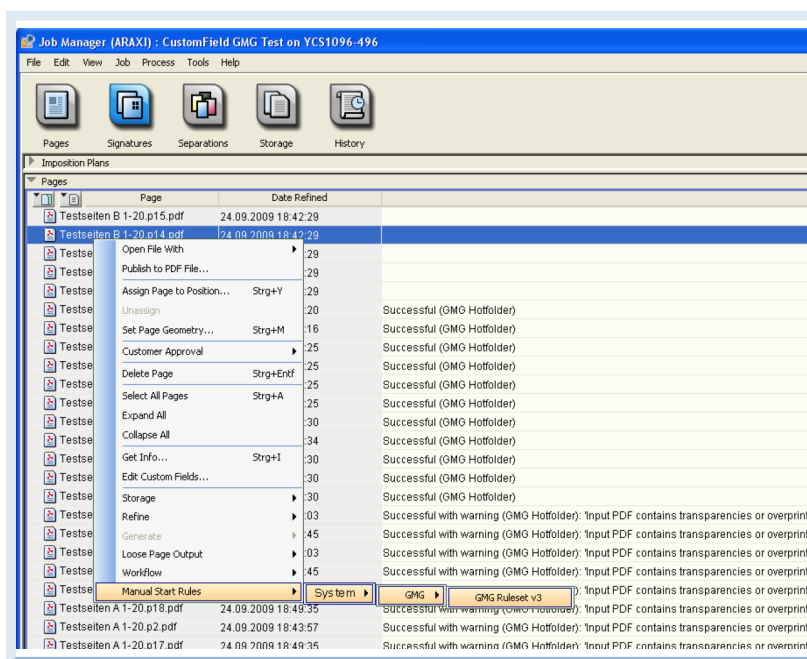


Fig. 12 Screenshot of choosing the GMG rule set.

18. Known limitations

Known issues

The following things are known limitations of the solution:

Importing the rule set

When importing the rule set, the following error message is displayed:

Rule Set Custom Fields - refine after color management - configure me-page is successful in rule set GMG Ruleset ColorServer 5 forms one or more conditional loops.

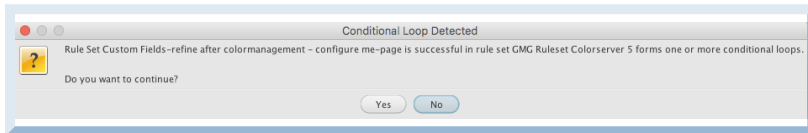


Fig. 13 Screenshot of the error message while importing the rule set.

Please, ignore this error message.

Prinerger **History**

In the Prinerger **History**, the following error messages occur:

Parameter assignment failed; event "FilterAcceptEvent255", action "SetFieldAction", rule name "GMG-Conversion - configure me"

Parameter assignment exception; message: Object not set to an instance of an object.

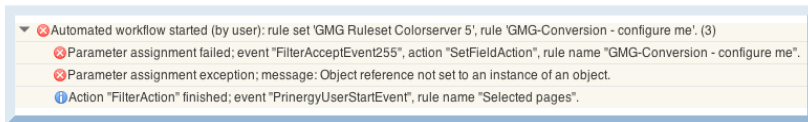


Fig. 14 Screenshot of the Prinerger **History** error message while importing the rule set.

Please, ignore these error messages.

19. Additional information and resources

Kodak Prinergy manual

You can find the complete manual of Kodak Prinergy System Administrator Guides 8.0 on the Kodak website:

<https://workflowhelp.kodak.com/display/PRINSAG80/Prinergy+System+Administration+Guides>