

## Installation Guide:

How to install

Brother QL-700 Label Printer

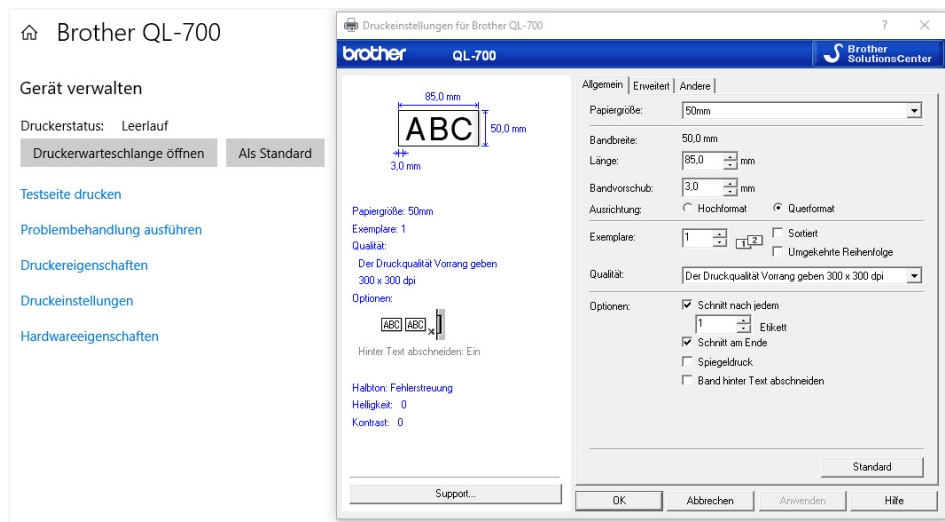
for GMG ProofControl

## Required Hardware:

- Label Printer: Brother QL-700
- Labels: Brother DK-22223, 50mm x 30,48m

## Installation Steps:

- 1) Insert labels into printer
- 2) Install printer driver (<https://bit.ly/3PjHm3m>)
- 3) Connect printer via USB to GMG ProofControl PC
- 4) Set printer properties:
  - Navigate to Windows > Devices and Printers > Brother QL-700
  - Edit printer properties:
    - Paper size: 50mm
    - Length: 85mm
    - Quality: Give priority to print quality 300 x 300 dpi



- 5) Start GMG ProofControl
- 6) Set GMG ProofControl options:
  - Printers
    - Spooler Printer for Labels: Brother QL-700